

CRANE

Spare part list DEPA Air Operated Diaphragm Pumps Series M

Date: 14th Aug 2012

Type: DL25-80-FA/CA/CX/SA/SX/SS

Drawing-No.: 03-1100-1010

Position	Description	Baugröße / Size	Type	Stück / No. Req.	Bestell-Nr./ Order-No.
25.01Q	Air valve, external, Q-type	25-80	FA/CA/SA/SS	1	2501051EX
25.01	Air valve, internal	25-40	All	1	2501053--
50.01	Air valve, internal	50-80	All	1	5001052--
25.01V	Air valve, internal, nickel plated	25-40	All	1	250105399
50.01V	Air valve, internal, nickel plated	50-80	All	1	500105299
25.02	Center block, Al, assy.	25-40	FA/CA/SA	1	250301---
25.02V	Center block, Al, assy., nickel plate valve	25-40	FA/CA/SA	1	250301-99
25.02B	Center block, bronze, assy.	25-40	CX/SX	1	251301---
25.02BV	Center block, bronze, assy., nick. pl. Val.	25-40	CX/SX	1	251301-99
25.02SS	Center block, SS 304, assy.	25/40	SS	1	251203--1
25.02SSV	Center block, SS 304, assy. nick.plate val.	25/40	SS	1	251320-99
25.02Q	Center block, Q-type, assy.	25-40	FA/CA/SA	1	2503013--
25.02SSQ	Center block, SS 304, Q-type, assy.	25-40	SS	1	251201---
50.02	Center block, Al, assy.	50-80	FA/CA/SA	1	500301---
50.02V	Center block, Al, assy., nickel plate valve	50-80	FA/CA/SA	1	500301-99
50.02B	Center block, assy.	50-80	CX/SX	1	501301---
50.02BV	Center block, assy., nickel plate valve	50-80	CX/SX	1	501301-99
50.02SS	Center block, SS 304, assy.	50-80	SS	1	501320--1
50.02SSV	Center block, SS 304, assy. nick.plate val.	50-80	SS	1	501320-99
50.02Q	Center block, Q-type, assy.	50-80	FA/CA/SA	1	5003013--
50.02SQ	Center block, SS 304, Q-type, assy.	50/80	SS	1	501201---
25.05Q	Pilot rod	25-40	FA/CA/SA/SS	2	251021-20
50.05Q	Pilot rod	50-80	FA/CA/SA/SS	2	501021-20
25.06Q	Pilot rod holder	25-40	FA/CA/SA/SS	2	251030-53
50.06Q	Pilot rod holder	50-80	FA/CA/SA/SS	2	501030-53
25.09	Hex. Screw, C.S.	25	CA/CX	4	900110191
25.09FA	Hex. Screw, C.S.	25	FA	4	900151291
25.09S	Hex. Screw, SS	25	SA/SX	4	900150211
25.10M	Base frame	25	CA,CX,SA,SX	2	251901-11
40.10	Base frame	40	All	2	401902-11
50.10	Base frame	50	All	2	501902-11
80.10	Base frame	80	All	2	801902-11
25.11	Rubber foot	25	CA,CX,SA,SX	4	251909-45
40.11	Rubber foot	40	All	4	251909-45
50.11	Rubber foot	50-80	All	4	501909-45
25.13	Gasket, Plug - on request	25-80	All	2	922000153
25.14A	Suction manifold, Alu	25	FA	1	251511-30
25.14C	Suction manifold, GGG 40	25	CA,CX	1	251510-32
25.14S	Suction manifold, 316L	25	SA/SX/SS	1	251510-35
25.14AZ	Suction elbow, Alu	25	DZ-FA/CA/SA	2	251555-35

CRANE

Spare part list DEPA Air Operated Diaphragm Pumps Series M

Date: 14th Aug 2012

Type: DL25-80-FA/CA/CX/SA/SX/SS

Drawing-No.: 03-1100-1010

Position	Description	Baugröße / Size	Type	Stück / No. Req.	Bestell-Nr./ Order-No.
25.14AF	Suction manifold drumpump, Alu	25	DF-FA	1	251520-30
40.14A	Suction manifold, Alu	40	FA	1	401510-30
40.14C	Suction manifold, GGG 40	40	CA/CX	1	401510-32
40.14S	Suction manifold, 316L	40	SA/SX/SS	1	401510-35
40.14AZ	Suction elbow, Alu	40	DZ-FA/CA/SA	2	401555-35
50.14A	Suction manifold, Alu	50	FA	1	501510-30
50.14C	Suction manifold, GGG 40	50	CA/CX	1	501510-32
50.14S	Suction manifold, 316L	50	SA/SX/SS	1	501510-35
50.14AZ	Suction elbow, Alu	50	DZ-FA	2	501550-30
50.14AY	Suction manifold, Y-type, Alu	50	DP-FA	1	501511-30
80.14A	Suction manifold, Alu	80	FA	1	801510-30
80.14C	Suction manifold, GGG 40	80	CA/CX	1	801510-32
80.14S	Suction manifold, 316L	80	SA/SX/SS	1	801510-35
80.14AZ	Suction elbow, Alu	80	DZ-FA/CA/SA	2	501555-35
80.14AY	Suction manifold, Y-type, Alu	80	DP-FA	1	801511-30
40.15	Rd.hd.bolt, C.S.	40	FA/CA/CX	4	900400191
40.15S	Rd.hd.bolt, SS	40	SA/SX/SS	4	900400311
50.15	Rd.hd.bolt, C.S.	50-80	FA/CA/CX	4	900400291
50.15S	Rd.hd.bolt, SS	50-80	SA/SX/SS	4	900400511
40.18	Nut, C.S.	40	FA/CA/CX	4	901000291
40.18S	Nut, SS	40	SA/SX/SS	4	901000111
50.18	Nut, C.S.	50-80	FA/CA/CX	4	901000391
50.18S	Nut, SS	50-80	SA/SX/SS	4	901000211
25.19A	Pump chamber, Alu	25	FA	2	251505-30
25.19C	Pump chamber, GGG 40	25	CA/CX	2	251505-32
25.19S	Pump chamber, 316L	25	SA/SX/SS	2	251505-35
40.19A	Pump chamber, Alu	40	FA	2	401505-30
40.19C	Pump chamber, GGG 40	40	CA/CX	2	401505-32
40.19S	Pump chamber, 316L	40	SA/SX/SS	2	401505-35
50.19A	Pump chamber, Alu	50	FA	2	501505-30
50.19C	Pump chamber, GGG 40	50	CA/CX	2	501505-32
50.19S	Pump chamber, 316L	50	SA/SX/SS	2	501505-35
80.19A	Pump chamber, Alu	80	FA	2	801505-30
80.19C	Pump chamber, GGG 40	80	CA/CX	2	801505-32
80.19S	Pump chamber, 316L	80	SA/SX/SS	2	801505-35
25.20	Plug C.S., zinc pl. - on request	25-80	CA/CX	2	905101-05
25.20S	Plug, 1.4541	25-80	FA/SA/SX/SS	2	905101-13
25.21A	Discharge manifold, Alu	25	FA	1	251512-30
25.21C	Discharge manifold, GGG 40	25	CA/CX	1	251512-32
25.21S	Discharge manifold, 316L	25	SA/SX/SS	1	251512-35

CRANE

Spare part list DEPA Air Operated Diaphragm Pumps Series M

Date: 14th Aug 2012

Type: DL25-80-FA/CA/CX/SA/SX/SS

Drawing-No.: 03-1100-1010

Position	Description	Baugröße / Size	Type	Stück / No. Req.	Bestell-Nr./ Order-No.
25.21AZ	Discharge elbow, Alu	25	DZ-FACA/SA	2	251556-35
40.21A	Discharge manifold, Alu	40	FA	1	401512-30
40.21C	Discharge manifold, GGG 40	40	CA/CX	1	401512-32
40.21S	Discharge manifold, 316L	40	SA/SX/SS	1	401512-35
40.21AZ	Discharge elbow, Alu	40	DZ-FA/CA/SA	2	401556-35
40.21 SY	Discharge manifold Y-type, 1.4301	40	DP-FA	1	401513-11
50.21A	Discharge manifold, Alu	50	FA	1	501512-30
50.21C	Discharge manifold, GGG 40	50	CA/CX	1	501512-32
50.21S	Discharge manifold, 316L	50	SA/SX/SS	1	501512-35
50.21AZ	Discharge elbow, Alu	50	DZ-FA/CA/SA	2	501556-35
50.21AY	Discharge manifold, Y-type, Alu	50	DP-FA	1	501513-30
80.21A	Discharge manifold, Alu	80	FA	1	801512-30
80.21C	Discharge manifold, GGG 40	80	CA,CX	1	801512-32
80.21S	Discharge manifold, 316L	80	SA/SX/SS	1	801512-35
80.21AZ	Discharge elbow, Alu	80	DZ-FA	2	801551-30
80.21AY	Discharge manifold, Y-type, Alu	80	DP-FA	1	801513-30
25.23	Hex. screw, C.S.	25	FA/CA/CX	4	900100191
25.23S	Hex. screw, SS	25	SA/SX/SS	4	900150111
40.23	Hex. screw, C.S.	40	FA/CA/CX	8	900151191
40.23S	Hex. screw, SS	40	SA/SX/SS	8	900151111
50.23	Hex. screw, C.S.	50	FA/CA/CX	8	900110391
50.23S	Hex. screw, SS	50	SA/SX/SS	8	900100811
80.23	Hex. screw, C.S.	80	FA/CA/CX	6	900110491
80.23S	Hex. screw, SS	80	SA/SX/SS	6	900160111
80.23	Lifting eye bolt, C.S.	80	FA/CA/CX	2	900800091
80.23S	Lifting eye bolt, SS	80	SA/SX/SS	2	900800211
25.24	Washer, C.S.	25	FA/CA/CX	16	902000105
25.24S	Washer, SS	25	SA/SX/SS	16	902001311
40.24	Washer, C.S.	40	FA/CA/CX	16	902000205
40.24S	Washer, SS	40	SA/SX/SS	16	902001411
50.24	Washer, C.S.	50	FA/CA/CX	16	902000305
50.24S	Washer, SS	50	SA/SX/SS	16	902001111
80.24	Washer, C.S.	80	FA/CA/CX	14	902000405
80.24S	Washer, SS	80	SA/SX/SS	14	902001511
25.25	Nut, C.S.	25	FA/CA/CX	8	901000191
25.25S	Nut, SS	25	SA/SX/SS	8	901000311
40.25	Nut, C.S.	40	FA/CA/CX	8	901000291
40.25S	Nut, SS	40	SA/SX/SS	8	901000111
50.25	Nut, C.S.	50	FA/CA/CX	8	901000391
50.25S	Nut, SS	50	SA/SX/SS	8	901000211

CRANE

Spare part list DEPA Air Operated Diaphragm Pumps Series M

Date: 14th Aug 2012

Type: DL25-80-FA/CA/CX/SA/SX/SS

Drawing-No.: 03-1100-1010

Position	Description	Baugröße / Size	Type	Stück / No. Req.	Bestell-Nr./ Order-No.
80.25	Nut, C.S.	80	FA/CA/CX	8	901000491
80.25S	Nut, SS	80	SA/SX/SS	8	901000411
25.26	Air chamber, C.S.	25	FA/CA/CX/SA/SX	2	251501-05
25.26H	Air chamber, SS 304	25	SS	2	251501-13
25.26Q	Air chamber, Q-type, C.S.	25	FA/CA/SA	2	251503-05
25.26HQ	Air chamber, Q-type, SS 304	25	SS	2	251503-13
40.26	Air chamber, C.S.	40	FA/CA/CX/SA/SX	2	401501-05
40.26H	Air chamber, SS 304	40	SS	2	401501-13
40.26Q	Air chamber, Q-type, C.S.	40	FA/CA/SA	2	401503-05
40.26HQ	Air chamber, Q-type, SS 304	40	SS	2	401503-13
50.26	Air chamber, C.S.	50	FA/CA/CX/SA/SX	2	501501-05
50.26H	Air chamber, SS 304	50	SS	2	501501-13
50.26Q	Air chamber, Q-type, C.S.	50	FA/CA/SA	2	501543-05
50.26HQ	Air chamber, Q-type, SS 304	50	SS	2	501543-13
80.26	Air chamber, C.S.	80	FA/CA/CX/SA/SX	2	801501-05
80.26H	Air chamber, SS 304	80	SS	2	801501-13
80.26Q	Air chamber, Q-type, C.S.	80	FA/CA/SA	2	801543-05
80.26HQ	Air chamber, Q-type, SS 304	80	SS	2	801543-13
25.27	Clamp band, assy.	25	All	2	250401---
40.27	Clamp band, assy.	40	All	2	400401---
50.27	Clamp band, assy.	50	All	2	500401---
80.27	Clamp band, assy.	80	All	2	800401---
25.30N	Diaphragm, NBR-el.cond.	25	All	2	251801-4B
25.30E	Diaphragm, EPDM	25	All	2	251801-42
25.30G	Diaphragm, EPDM-grey	25	All	2	251801-43
25.30F	Diaphragm, FKM	25	All	2	251801-44
25.30B	Diaphragm, NRS	25	All	2	251803-45
25.30L	Diaphragm, NRR wear-resistant	25	All	2	251801-49
25.30S	Diaphragm, Santoprene	25	All	2	251804-4C
25.30TR	Diaphragm, PTFE/Back up	25	All	2	250180165
25.30Z *	Diaphragm, PTFE DEPA E4, FDA, cond.	25	All	2	251801-89BG
40.30N	Diaphragm, NBR-el.cond.	40	All	2	401801-4B
40.30E	Diaphragm, EPDM	40	All	2	401801-42
40.30G	Diaphragm, EPDM-grey	40	All	2	401801-43
40.30F	Diaphragm, FKM	40	All	2	401801-44
40.30B	Diaphragm, NRS	40	All	2	401803-45
40.30L	Diaphragm, NRR wear-resistant	40	All	2	401801-49
40.30S	Diaphragm, Santoprene	40	All	2	401804-4C
40.30TR	Diaphragm, PTFE/Back up	40	All	2	400180165
40.30Z *	Diaphragm, PTFE DEPA E4, FDA, cond.	40	All	2	401801-89BG

CRANE

Spare part list DEPA Air Operated Diaphragm Pumps Series M

Date: 14th Aug 2012

Type: DL25-80-FA/CA/CX/SA/SX/SS

Drawing-No.: 03-1100-1010

Position	Description	Baugröße / Size	Type	Stück / No. Req.	Bestell-Nr./ Order-No.
50.30N	Diaphragm, NBR-el.cond.	50	All	2	501801-4B
50.30E	Diaphragm, EPDM	50	All	2	501801-42
50.30G	Diaphragm, EPDM-grey	50	All	2	501801-43
50.30F	Diaphragm, FKM	50	All	2	501801-44
50.30B	Diaphragm, NRS	50	All	2	501803-45
50.30L	Diaphragm, NRR wear-resistant	50	All	2	501801-49
50.30S	Diaphragm, Santoprene	50	All	2	501804-4C
50.30TR	Diaphragm, PTFE/Back up	50	All	2	500180165
50.30Z *	Diaphragm, PTFE DEPA E4, FDA, cond.	50	All	2	501801-89BG
80.30N	Diaphragm, NBR-el.cond.	80	All	2	801801-4B
80.30E	Diaphragm, EPDM	80	All	2	801801-42
80.30G	Diaphragm, EPDM-grey	80	All	2	801801-43
80.30F	Diaphragm, FKM	80	All	2	801801-44
80.30B	Diaphragm, NRS	80	All	2	801803-45
80.30S	Diaphragm, Santoprene	80	All	2	801804-4C
80.30TR	Diaphragm, PTFE/Back up	80	All	2	800180165
25.31N	Valve seat, NBR	25	All	4	251805-41
25.31E	Valve seat, EPDM	25	All	4	251805-42
25.31G	Valve seat, EPDM-grey	25	All	4	251805-43
25.31F	Valve seat, FKM	25	All	4	251805-44
25.31B	Valve seat, NRS	25	All	4	251805-45
25.31T	Valve seat, PTFE, with 2 FEP O-rings	25	All	4	250180760
25.31R	Valve seat, SS, with 2 FEP O-rings	25	All	4	250180511
40.31N	Valve seat, NBR	40	All	4	401805-41
40.31E	Valve seat, EPDM	40	All	4	401805-42
40.31G	Valve seat, EPDM-grey	40	All	4	401805-43
40.31F	Valve seat, FKM	40	All	4	401805-44
40.31B	Valve seat, NRS	40	All	4	401805-45
40.31T	Valve seat, PTFE, with 2 FEP O-rings	40	All	4	400180760
40.31R	Valve seat, SS, with FEP 2 O-rings	40	All	4	400180511
50.31N	Valve seat, NBR	50	All	4	501805-41
50.31E	Valve seat, EPDM	50	All	4	501805-42
50.31G	Valve seat, EPDM-grey	50	All	4	501805-43
50.31F	Valve seat, FKM	50	All	4	501805-44
50.31B	Valve seat, NRS	50	All	4	501805-45
50.31T	Valve seat, PTFE, with 2 FEP O-rings	50	FA/CA/CX	4	500180760
50.31R	Valve seat, SS, with 2 FEP O-rings	50	All	4	500180511
80.31N	Valve seat, NBR	80	All	4	801805-41
80.31E	Valve seat, EPDM	80	All	4	801805-42
80.31G	Valve seat, EPDM-grey	80	All	4	801805-43

CRANE

Spare part list DEPA Air Operated Diaphragm Pumps Series M

Date: 14th Aug 2012

Type: DL25-80-FA/CA/CX/SA/SX/SS

Drawing-No.: 03-1100-1010

Position	Description	Baugröße / Size	Type	Stück / No. Req.	Bestell-Nr./ Order-No.
80.31F	Valve seat, FKM	80	All	4	801805-44
80.31B	Valve seat, NRS	80	All	4	801805-45
80.31T	Valve seat, PTFE, with 2 FEP O-rings	80	FA/CA/CX	4	800180760
80.31R	Valve seat, SS, with 2 FEP O-rings	80	All	4	800180511
25.32N	Valve ball, NBR	25	All	4	251810-41
25.32E	Valve ball, EPDM	25	All	4	251810-42
25.32G	Valve ball, EPDM-grey	25	All	4	251810-43
25.32F	Valve ball, FKM	25	All	4	251810-44
25.32B	Valve ball, NRS	25	All	4	251810-45
25.32T	Valve ball, PTFE	25	All	4	251810-62
25.32R	Valve ball, SS	25	All	4	251810-13
25.32V	Valve ball, NRS-core	25	All	4	251811-85
25.32Y	Valve ball, NBR-core	25	All	4	251811-81
25.32W	Valve ball, EPDM-core	25	All	4	251811-82
25.32X	Valve ball, EPDM-grey-core	25	All	4	251811-83
25.32Z	Valve ball, PTFE-core	25	All	4	251810-66
40.32N	Valve ball, NBR	40	All	4	401810-41
40.32E	Valve ball, EPDM	40	All	4	401810-42
40.32G	Valve ball, EPDM-grey	40	All	4	401810-43
40.32F	Valve ball, FKM	40	All	4	401810-44
40.32B	Valve ball, NRS	40	All	4	401810-45
40.32T	Valve ball, PTFE	40	All	4	401810-62
40.32R	Valve ball, SS	40	All	4	401810-13
40.32V	Valve ball, NRS-core	40	All	4	401811-85
40.32Y	Valve ball, NBR-core	40	All	4	401811-81
40.32W	Valve ball, EPDM-core	40	All	4	401811-82
40.32X	Valve ball, EPDM-grey-core	40	All	4	401811-83
40.32Z	Valve ball, PTFE-core	40	All	4	401810-66
50.32N	Valve ball, NBR	50	All	4	501810-41
50.32E	Valve ball, EPDM	50	All	4	501810-42
50.32G	Valve ball, EPDM-grey	50	All	4	501810-43
50.32F	Valve ball, FKM	50	All	4	501810-44
50.32B	Valve ball, NRS	50	All	4	501810-45
50.32T	Valve ball, PTFE	50	All	4	501810-62
50.32R	Valve ball, SS	50	All	4	501810-13
50.32V	Valve ball, NRS-core	50	All	4	501811-85
50.32Y	Valve ball, NBR-core	50	All	4	501811-81
50.32W	Valve ball, EPDM-core	50	All	4	501811-82
50.32X	Valve ball, EPDM-grey-core	50	All	4	501811-83
50.32Z	Valve ball, PTFE-core	50	All	4	501810-66

CRANE

Spare part list DEPA Air Operated Diaphragm Pumps Series M

Date: 14th Aug 2012

Type: DL25-80-FA/CA/CX/SA/SX/SS

Drawing-No.: 03-1100-1010

Position	Description	Baugröße / Size	Type	Stück / No. Req.	Bestell-Nr./ Order-No.
80.32N	Valve ball, NBR	80	All	4	801810-41
80.32E	Valve ball, EPDM	80	All	4	801810-42
80.32G	Valve ball, EPDM-grey	80	All	4	801810-43
80.32B	Valve ball, NRS	80	All	4	801810-45
80.32T	Valve ball, PTFE	80	All	4	801810-62
80.32R	Valve ball, SS	80	All	4	801810-13
80.32Y	Valve ball, NBR-core	80	All	4	801811-81
80.32W	Valve ball, EPDM-core	80	All	4	801811-82
80.32X	Valve ball, EPDM-grey-core	80	All	4	801811-83
80.32Z	Valve ball, PTFE-core	80	All	4	801810-66
25.41	Washer-shaft	25-40	All	2	902000405
50.41	Washer-shaft	50-80	All	2	902000505
25.42	Piston, inner, short stroke	25	All	2	250120830
40.42	Piston, inner, short stroke	40	All	2	400120830
50.42	Piston, inner, short stroke	50	All	2	500120830
80.42	Piston, inner, short stroke	80	All	2	800120830
25.45	Shaft	25	All	1	251207-10
40.45	Shaft	40	All	1	401207-10
50.45	Shaft	50	All	1	501207-10
80.45	Shaft	80	All	1	801207-10
25.46	Piston, inner	25	All	2	251208-30
40.46	Piston, inner	40	All	2	401208-30
50.46	Piston, inner	50	All	2	501208-30
80.46	Piston, inner	80	All	2	801208-30
25.47	Piston, outer, C.S.	25	CA/CX	2	251211-00
25.47V	Piston, outer, 316L	25	FA/SA/SX/SS	2	251214-13
40.47	Piston, outer, C.S.	40	CA/CX	2	401211-00
40.47V	Piston, outer, 316L	40	FA/SA/SX/SS	2	401214-13
50.47	Piston, outer, C.S.	50	CA/CX	2	501211-00
50.47V	Piston, outer, 316L	50	FA/SA/SX/SS	2	501214-13
80.47	Piston, outer, C.S.	80	CA/CX	2	801211-00
80.47V	Piston, outer, 316L	80	FA/SA/SX/SS	2	801214-13
25.50A	Center block, Alu	25-40	FA/CA/SA	1	251201-30
25.50B	Center block, Bz	25-40	CX/SX	1	251202-36
25.50S	Center block, SS 304	25/40	SS	1	251203-11
25.50Q	Center block, Q-type	25-40	FA/CA/SA	1	251251-30
25.50LSQ	Center block, Q-type, SS 304	25/40	SS/HS	1	251201-11
50.50A	Center block, Alu	50-80	FA/CA/SA	1	501201-30
50.50B	Center block, Bz	50-80	CX/SX	1	501202-36
50.50S	Center block, SS 304	50/80	SS	1	501320-11

CRANE

Spare part list DEPA Air Operated Diaphragm Pumps Series M

Date: 14th Aug 2012

Type: DL25-80-FA/CA/CX/SA/SX/SS

Drawing-No.: 03-1100-1010

Position	Description	Baugröße / Size	Type	Stück / No. Req.	Bestell-Nr./ Order-No.
50.50Q	Center block, Q-type	50-80	FA/CA/SA	1	501251-30
50.50LSQ	Center block, Q-type, SS 304	50/80	SS	1	501255-11
25.51	Gasket	25-40	All	2	921000173
25.51	Gasket	25/40	SS	2	921000673
25.51Q	Gasket, Q-type	25-40	FA/CA/SA	2	921000873
25.51SQ	Gasket, Q-type	25/40	SS	2	921000073
50.51	Gasket	50-80	All	2	921000273
50.51S	Gasket	50/80	SS	2	921001273
50.51Q	Gasket, Q-type	50-80	FA/CA/SA	2	921000973
50.51SQ	Gasket, Q-type	50/80	SS	2	921200473
25.61T/R	O-ring FEP f. Valve seat PTFE/VA	25	All	8	920202-79
40.61T/R	O-ring FEP f. Valve seat PTFE/VA	40	All	8	920203-79
50.61T	O-ring FEP f. Valve seat PTFE	50	FA/CA/CX	8	920204-79
50.61R	O-ring FEP f. Valve seat VA	50	All	8	920204-79
80.61T	O-ring FEP f. Valve seat PTFE	80	FA/CA/CX	8	920205-79
80.61R	O-ring FEP f. Valve seat VA	80	All	8	920205-79
25.64	Shaft bearing	25-40	All not SS-Q	2	251206-64
25.64SQ	Shaft bearing	25/40	SS-Q	1	251206-64
25.64SQ	Shaft bearing	25/40	SS-Q	2	251206---
50.64	Shaft bearing	50-80	All not SS-Q	2	501206-64
50.64Q	Shaft bearing	50/80	SS-Q	1	501206-64
50.64Q	Shaft bearing	50/80	SS-Q	2	501206---
25.65	Sealing/O-ring	25-40	All not SS-Q	1	250106---
25.65SQ	Sealing/O-ring	25/40	SS-Q	2	250106---
50.65	Sealing/O-ring	50-80	All not SS-Q	1	500106---
50.65SQ	Sealing/O-ring	50/80	SS-Q	2	500106---
25.66	Air inlet, C.S., zinc pl.	25-40	FA/CA/CX/SA/SX	1	252001-05
25.66SQ	Air inlet, SS	25-40	SS	1	252001-14
50.66	Air inlet, C.S., zinc pl.	50-80	FA/CA/CX/SA/SX	1	502001-05
50.66S	Air inlet, SS	50-80	SS	1	502001-14
25.681	O-ring, Air filter	25-40	All	1	920012541
50.681	O-ring, Air filter	50-80	All	1	920012941
25.70	Muffler	25-40	FA/CA/SA/SS	1	252020-48
25.70X	High speed muffler	25-40	CX/SX	1	115001---
	Elbow for speed muffler	25	CX/SX	1	930051-20
	Extension for speed muffler	25	CX	1	930120-05
	Extension for speed muffler	25	SX	1	930120-20
	Bow for speed muffler	40	CX/SX	1	930081-05
50.70	Muffler	50/80	FA/CA/SA/SS	1	502020-48

CRANE

Spare part list DEPA Air Operated Diaphragm Pumps Series M

Date: 14th Aug 2012

Type: DL25-80-FA/CA/CX/SA/SX/SS

Drawing-No.: 03-1100-1010

Position	Description	Baugröße / Size	Type	Stück / No. Req.	Bestell-Nr./ Order-No.
50.70X	High speed muffler	50-80	<i>CX/SX</i>	1	115002---
	Bow for speed muffler	50-80	<i>CX/SX</i>	1	930082-05
	Extension for speed muffler	80	<i>CX/SX</i>	1	900121-05
25.77	Counter sunk screw/Air chamber	25-40	<i>All</i>	8	900300191
25.77Q	Counter sunk screw/Air chamber Q	25-40	<i>All</i>	8	900300391
50.77	Counter sunk screw/Air chamber	50	<i>All</i>	8	900300491
80.77	Hex. screw/Air chamber	80	<i>FA/CA/CX/SA/SX</i>	8	900162491
80.77L	Hex. Screw, Air chamber	80	<i>SS</i>	8	900161211
80.77a	Disk	80	<i>FA/CA/CX/SA/SX</i>	8	902000305
80.77La	Disk	80	<i>SS</i>	8	902001111
50.78L	Counter sunk screw, Air chamber, A-type	50/80	<i>SS</i>	2	900310211

The complete spare part number results from
the item and the order-no.

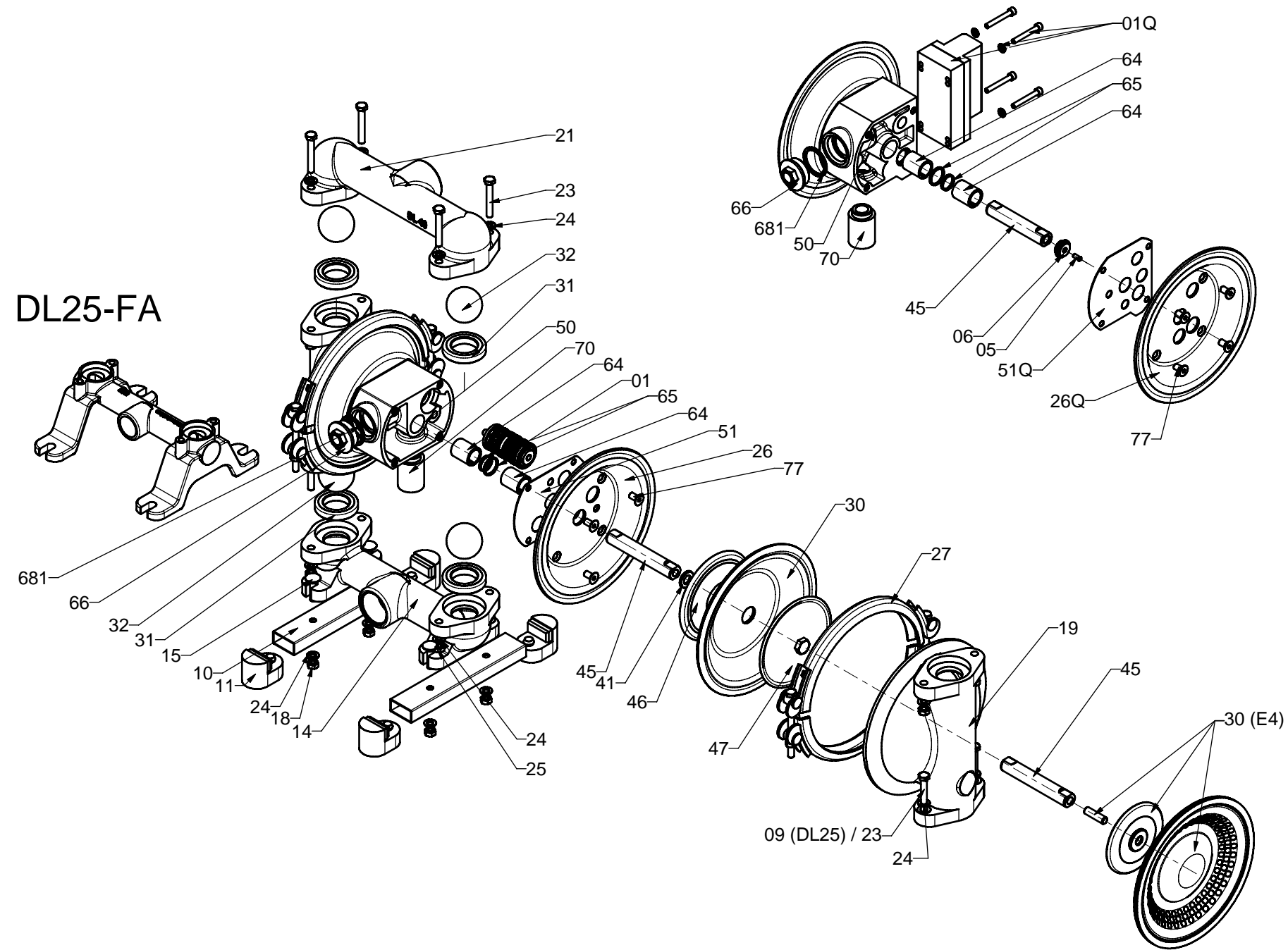
Example:

Diaphragm EPDM for DL25.30E

order no. 251801-42

* with pos. 30Z not applicable Pos. 41 ,46 and 47

DL25-FA



Allgemeintoleranz General Tolerance	Oberfläche Surface	Maßstab Scale	1:1	Urheber- und Mißbrauchschutz nach DIN 34 Copyright Protection According To DIN 34
DIN ISO 2768-mH	DIN ISO 1302	±0.5	$\begin{matrix} -0.3 \\ -0.1 \end{matrix}$	DIN 6 Methode 1
Datum/Date	Name	Benennung / Description		
Bezt./Design	12.01.10	Prenten		
		DL25 bis 80-M		
CRANE 11001010-DL 25		Format	Zeichnungsnummer / Drawing - No.	Blatt/Sheet
Filename		A2	1100-1010	1 von 1
		Ersatz für / Replacement For		