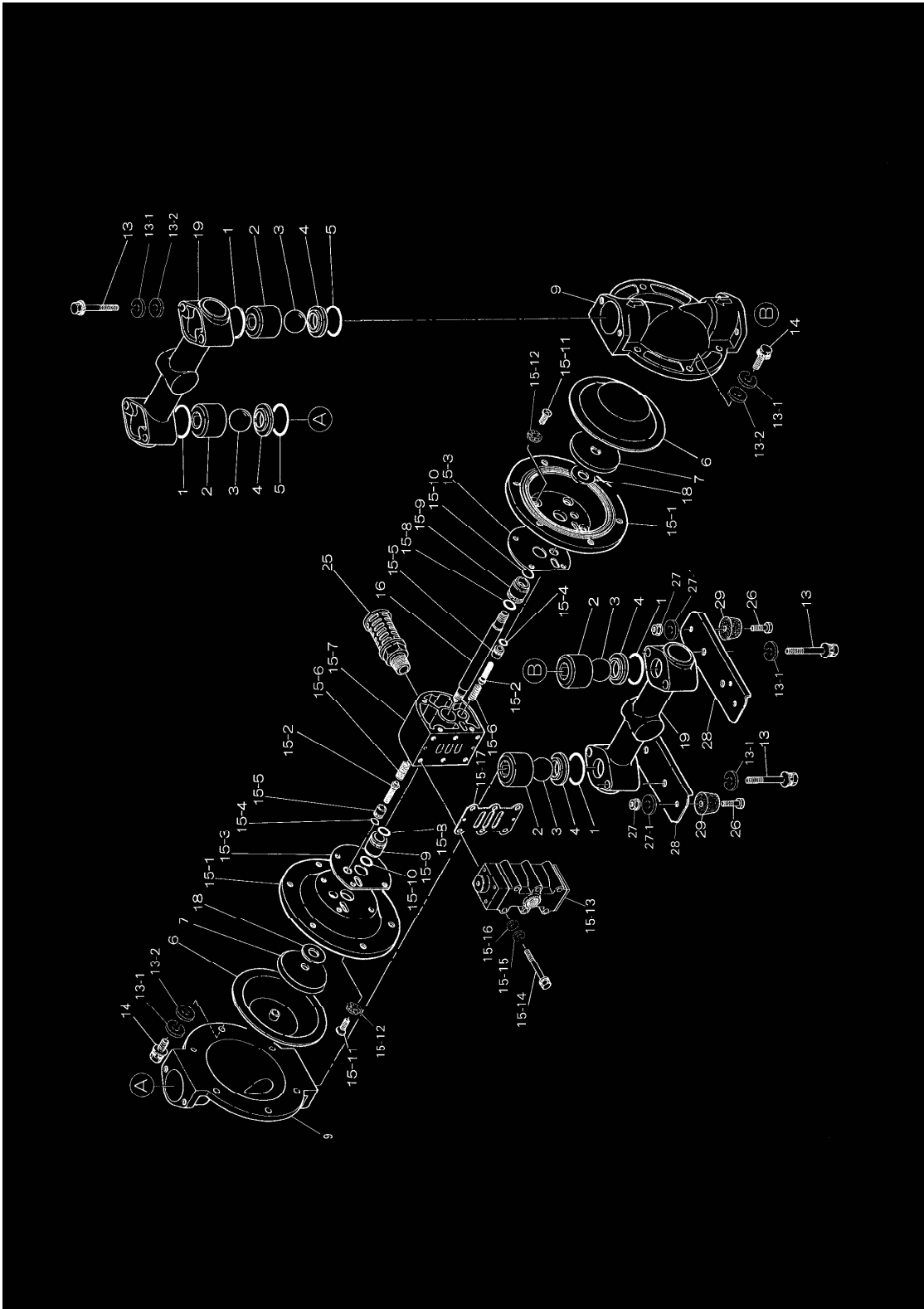


# 8.7 EXPLODED VIEW

■ NDP-25 BATUFK1,2



## 8.7 PARTS LIST NDP-25 BATUFK1,2

PARTS LIST				
NDP-25-BATUFK1,2				
No.	B A TUFK1	B A TUFK2	DESCRIPTION	Q`TY
1	643-044	643-044	O-RING	4
2	711-702	711-702	BALL GUIDE	4
3	770-691	770-691	BALL	4
4	590-087	590-087	VALVE SEAT	4
5	771-130	771-130	O-RING	2
6	02-1166	02-1166	DIAPHRAGM	2
9	711-687	711-687	PUMP CHAMBER	2
10	682-263	682-263	NUT	2
13	682-267	682-267	BOLT	8
13-1	631-421	631-421	SPRING WASHER	20
13-2	631-210	631-210	WASHER	16
14	682-725	682-725	BOLT	12
15	02-0125NF	02-0125NF	BODY	1
15-1	710-276	710-276	AIR CHAMBER	2
15-2	802-360	802-360	PILOT VALVE	2
15-3	771-057	771-057	GASKET	2
15-4	640-009	640-009	O-RING	2
15-5	771-945	771-945	VALVE SEAT	2
15-6	708-666	708-666	SPRING	2
15-7	709-154	709-154	BODY	1
15-8	685-276	685-276	O-RING	2
15-9	771-561	771-561	THROAT BEARING	2
15-10	683-285	683-285	O-RING	2
15-10	685-414	685-414	V-PACKING	2
15-11	682-268	682-268	SCREW	8
15-12	000-268	000-268	WASHER	8
15-13	802-361	802-361	VALVE ASSY	1
15-14	682-265	682-265	BOLT	6
15-15	631-420	631-420	SPRING WASHER	6
15-16	631-013	631-013	WASHER	6
15-17	771-056	771-056	GASKET	1
16	02-1165	02-1165	CENTRE ROD	1
18	771-054	771-054	CUSHION	2
19	831-244	831-244	MANIFOLD ASSY	2
25	680-913	680-913	MUFFLER (metal)	1
26	000-550	000-550	BOLT	4
27	000-549	000-549	NUT	4
27-1	000-548	000-548	WASHER	4
28	709-156	709-156	BASE	2
29	000-551	000-551	STAND RUBBER	4
7	02-1153	02-1152	CENTRE DISC	2